



Human Machine Interfaces Product Line-up Guide

Harmony Panels, Industrial PCs, and Software

www.se.com/HMI

Life Is On

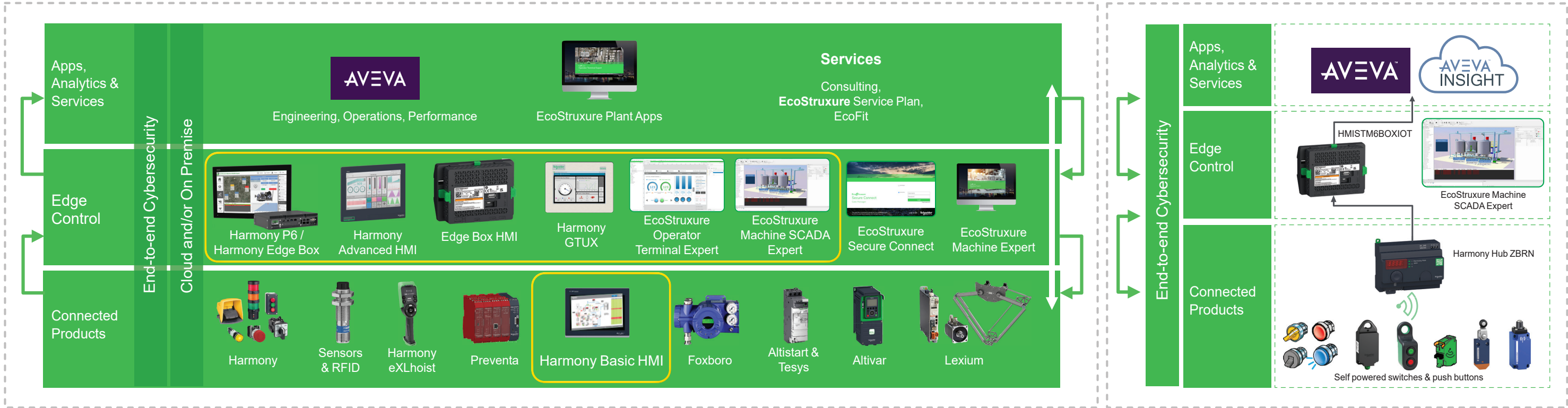
Schneider
Electric

EcoStruxure™ for Harmony HMI

EcoStruxure is Schneider Electric's innovative IoT-enabled, plug-and-play, open, interoperable architecture and platform addressing the needs of automation applications for a wide range of industries. The EcoStruxure platform is the functional technology backbone, which enables embedded connectivity and intelligence using standard-based communication protocols. This has three levels or layers, namely: Connected Products, Edge Control, and Apps, Analytics & Services, that can be hosted in the cloud as well as on premise.

EcoStruxure™ HMI Architectures

The Harmony Industrial PCs and Edge Box offer meets IIoT challenges at the Edge Control level by enabling secure communication from connected products on the shop floor to the required software and applications on the top floor. All Basic and Advanced Harmony HMI panels meets IIoT challenges at the Edge Control and Connected Products level, by enabling secure communication to the required Software. This provides improved profitability and new business opportunities, through enhanced asset performance for more efficient operation and maintenance of capital assets.



Harmony HMI and iPC families

Basic HMI for simple machines		Advanced HMI for performance machines		Industrial PC for line management	
A cost-effective, optimized HMI range that also delivers on features and performance		A high-performance range of HMIs that allows users to manage demanding application requirements		A comprehensive range of intuitive industrial PCs for improved productivity to enhance operator experience	
<p>Harmony ST6 Basic HMI/Basic web HMI/ Basic Modular HMI/Basic Edge Box HMI</p>	<p>Harmony GTU</p>	<p>Harmony GTO</p>	<p>Harmony GTUX</p>	<p>Harmony Edge Box</p>	<p>Harmony FP6</p>
<p>EcoStruxure Operator Terminal Expert</p>	<p>Harmony STU</p>	<p>Harmony SCU</p>	<p>Harmony GK</p>	<p>Harmony BX1</p>	<p>EcoStruxure Machine SCADA Expert</p>
<p>Vijeo Designer</p>	<p>Vijeo Designer</p>	<p>Vijeo Designer</p>	<p>Vijeo Designer</p>	<p>EcoStruxure Operator Terminal Expert</p>	<p>Vijeo Designer</p>
Application		Service		Application	
<p>Remote access apps</p>		<p>EcoStruxure Industrial Device</p>		<p>EcoStruxure Secure Connect</p>	



Life Is On

Schneider
Electric

General Contents

HMI: Product Line-up Guide

■ Product Panorama

□ Basic HMI panels for simple machines.....	page 3
□ Advanced HMI panels for performance machines.....	page 4
□ Harmony Industrial PCs for line management.....	page 5
□ HMI software and services	page 7
□ Harmony USB accessories.....	page 11

■ Quick Product Selection Tables

□ Basic HMI panels for simple machine.....	page 13
□ Advanced HMI panels for performance machines.....	page 13
□ Harmony Industrial PCs for line management.....	page 14
□ HMI software comparison table.....	page 15
□ Harmony USB compatible accessories table	page 15

■ Examples of use cases

□ Harmony ST6 Basic HMI for simple machines.....	page 17
□ Harmony ST6 Basic HMI in the End User Plant	page 18
□ Harmony iPC in process & manufacturing optimization	page 18

Product Panorama

Basic HMI panels for simple machines

Harmony ST6 — High-resolution and cost-efficient basic HMI



Harmony STM6: W4", W7"
Harmony ST6/STW6: W4", W7", W10", W12", W15"



Modular Harmony STM6



Modular HMI Gateway Box



Edge Box HMI



Supporting Software



EcoStruxure Operator Terminal Expert



EcoStruxure Machine SCADA Expert



HTML 5

- Cost-effective with good quality
- Part of Schneider EcoStruxure Architecture
- Superior high-resolution screen with 16M colors
- Powered by new-generation software "EcoStruxure Operator Terminal Expert" for high-quality graphics and stylish design
- Tool-free mounting with newly-designed mounting fastener, no need for screwdriver
- 2x Ethernet with Dual IP, end-to-end Cybersecurity
- Modular HMI version with push button 22.5 mm/0.885 in. mounting system
- Web HMI version with embedded browser (instead of HMI software) for visualizing HTML5 servers on industrial devices
- Remote visualization using Web Viewer feature
- Faceless HMI version with STM6 Gateway Box and Web Viewer feature for applications that do not need a full time operator screen
- Supports Cloud Services on Edge Box HMI (HMISTM6BOXIOT) due to the power of EcoStruxure Machine SCADA Expert software

Harmony STO7 — Compact color HMI



Supporting Software



Harmony STO7: W4.3"



EcoStruxure Operator Terminal Expert

- TFT color screen with 480 x 272 pixels
- Larger screen with full-size ratio in the 4.3" class
- 3 versions for various communication types

Harmony GTO — Standard HMI



Supporting Software



Harmony GTO: 3.5", 5.7", W7", 7", 10", 12"



Vijeo Designer

- Excellent brightness with TFT 65K colors
- Stainless steel panel for food and beverage applications
- Standard front and IP65 degree of protection
- Extended Temperature - up to 55 °C/131 °F
- Easy to install and sustainable offer
- Full range of international certifications
- No logo and full conformal coating versions available

Harmony STU — Cut-out free HMI



Supporting Software



Harmony STU: 3.5", 5.7"



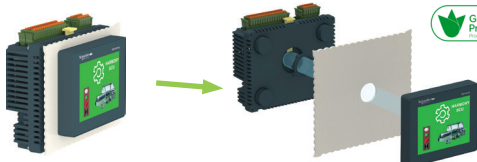
Vijeo Designer

- Compact for space saving
- Innovative tool-free mounting via 22.5 mm/0.885 in. hole
- Ethernet port RJ45 10BASE-T/100BASE-TX
- Separately mounted via 3 m or 5 m cable with mounting adapter
- Modular design for easy maintenance

Harmony SCU — Cut-out free HMI controller



Supporting Software



Harmony SCU: 3.5", 5.7"



EcoStruxure Machine Expert

- Optimum all-in-one combination for HMI and Control
- Innovative tool-free mounting via 22.5 mm/0.885 in. hole
- Reduce machine assembly time and cost
- Space saving
- Embedded CANopen port for field networking
- Modular design for easy maintenance

Advanced HMI panels for performance machines

Harmony GTU — High performance modular HMI



Supporting Software



Harmony GTU: W7", 10", W10", 12, W12", 15", W15", W19"



EcoStruxure Operator Terminal Expert



Vijeo Designer

- 8 sizes of high-resolution displays ranging from 7" to 19", either with modern 16:9 or standard 4:3 ratio
- 3 boxes, two with Real Time OS and one with fully open Windows based
- Up to 2 separate Ethernet ports, serial communication ports, and field bus options suiting IoT
- Industrial multi-touch and fully coated offer
- All memory removable for PC-free box replacements
- Wireless LAN enabled display
- Easy to install with integrated mounting fastener and antidrop lock
- Multi-display capability with Open box using DVI interface or multi-display adapter

Harmony GTUX — eXtreme HMI



Supporting Software



Harmony GTUX: W7", W12", W15"



EcoStruxure Operator Terminal Expert



Vijeo Designer

- A wide temperature range from -30...+70 °C / -22 ...+158 °F
- Sunlight Readable: High brightness LCD (1000 cd/m²), anti-glare surface
- Robustness: UV Protection, conformal coated (fully coated)
- Dust and water proof (IP66F, IP67F and UL50E Type 4X (Outdoor use))
- Environmental standard: Class 1, Div. 2, ATEX/IECEX Zone 2/22
- Variety of interfaces including dual Ethernet ports
- Modular design with stainless front face
- Suitable for industry segments like Oil & gas, Water and Waste Water (WWW) management

Harmony GK — Keyboard HMI



Supporting Software



Harmony GK: 5.7", 10.4"



Vijeo Designer

- Fine control inputs even in severe environment
- Touch screen and keypad keys configurable simultaneously or separately
- Highly robust with operating temperatures up to 55 °C / 131 °F, reducing maintenance problems and time

Harmony Industrial PCs and Edge Box for line management

Harmony P6 Industrial PCs — Drive efficiency and productivity at the Edge of EcoStruxure



Supporting Software



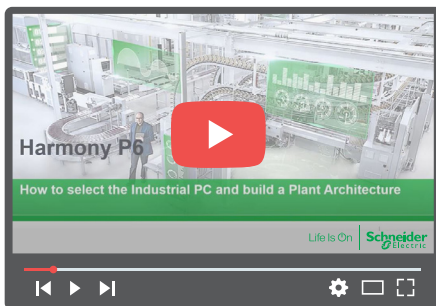
EcoStruxure Operator
Terminal Expert



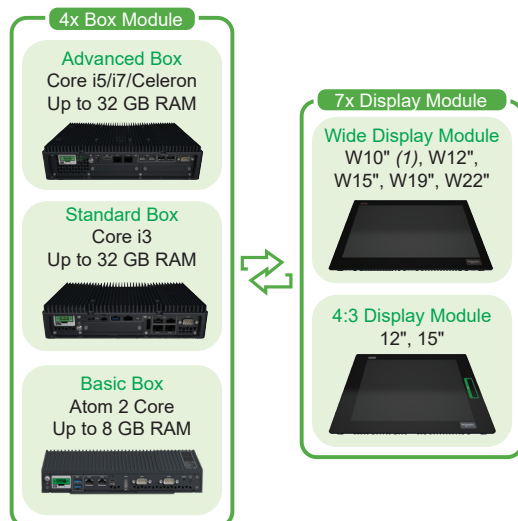
EcoStruxure
Machine
SCADA Expert



Harmony P6 Modular Box and Modular Display: 12", 15", W10", W12", W15", W19", W22"



How to select the Industrial PC and build a Plant Architecture
Click to view the video



- HMIP6 (1)
- Advanced Modular Box PC
 - Intel Core i5 up to 4.1 GHz or Intel Core i7 up to 4.4 GHz or Intel Celeron up to 2.0 GHz, UHD Graphics accelerator
 - 8 to 32 GB or 4 to 16 GB DDR4 RAM, 1x M.2 SSD SATA and 2x 2.5-inch SATA (HDD/SSD) storage slots
 - USB Type A (2x USB 2.0 and 2x USB 3.0), USB Type C (1x USB 3.0), 1x COM RS-232C, 2x RJ45 Ethernet, 1x Display port
 - 2x interface slots and optional extension module for 2x PCI/PCIe slots
 - Default TPM module for encryption
- Standard Modular Box PC
 - Intel Core i3 up to 3.9 GHz, UHD Graphics accelerator
 - 8 to 32 GB DDR4 RAM, 1x M.2 SSD SATA and 1x 2.5-inch SATA (HDD/SSD) storage slots
 - USB Type A (2x USB 2.0 and 2x USB 3.0), USB Type C (1x USB3.0), 1x COM RS-232C, 2x RJ45 Ethernet, 1x Display port
 - 2x interfaces slots
 - Default TPM module for encryption
- Basic Modular Box PC
 - Intel Atom 1.3 GHz (2 cores) / 2.0G Hz (4 cores), UHD Graphics accelerator
 - 8 GB DDR4 RAM, 2x M.2 SSD SATA storage slots and SD card
 - USB Type A (2x USB 3.0), USB Type C (1x USB3.0), 2x COM RS-232C/422/485, 2x RJ45 Ethernet, 1x Display port, 1x interfaces slots
 - Default TPM module for encryption
- HMIDM6
 - 4:3 12" and 15" (XGA) color LCD resistive analog multi-touch (2 points) screen with 1x USB 2.0 (Type A), and front USB cover
 - 16:9 10" and 12" (WXGA)/15" (FWXGA)/19" and 21" (FHD) projected capacitive multi-touch (2 points) screen, 7H hardness, anti-scratch, 3 touch mode configuration
 - IP66, Nema 4X indoor front panel
 - All models are certified for CE, RCM, UL 61010-2-201, CSA C22.2 No. 61010-2-201, UL121201, and CSA C22.2 No. 213
 - All DC models are certified for IECEx/ATEX for use in Zone 2 gas/Zone 22 dust, DNV

(1) Available as Configured-to-order only and can be ordered using the online configurator.

Harmony Industrial PCs and Edge Box for line management

Harmony BX1 — Edge box series with Linux OS to support control and compute capabilities



Supporting Software



EcoStruxure Automation Expert



Harmony BX1

- HMIBX1 (1)
 - ARM NXP i.MX8M Plus Quad-Core Cortex-A53 1.6GHz
 - 4 GB RAM, 2x Ethernet, 2x COM RS-232/432/485, 2x USB 3.0, 2x CAN FD Ports, TPM 2.0 integrated.
 - 1x HDMI (for configuration only)
 - 32 GB eMMC (soldered), 1x microSD card slot, 2x mini PCIe slot and, antenna connectors
 - Runs EcoStruxure Automation Expert SoftdPAC

Harmony FP6 — Industrial Flat Panel Monitors



Harmony HMIFP6 : 12", 15", W10", W12", W15", W19", W22"

- HMIFP6
 - 4:3 12" and 15" (XGA) color LCD resistive analog multi-touch (2 points) screen with 1x USB 2.0 (Type A), and front USB cover
 - 16:9 10" and 12" (WXGA)/15" (FWXGA)/19" and 22" (FHD) projected capacitive multi-touch (2 points) screen, 7H hardness, anti-scratch, 3 touch mode configuration IP66, Nema 4X indoor front panel
 - All models are certified for CE, RCM, UL 61010-2-201, CSA C22.2 No. 61010-2-201, UL121201 (2), and CSA C22.2 No. 213 (2), IECEx/ATEX for use in Zone 2 gas/Zone 22 dust (2)

(1) EcoStruxure Operator Terminal Expert and EcoStruxure Machine SCADA Expert is not supported by Harmony HMIBX1.

(2) On the front panel when properly installed in an enclosure and not using the front panel USB port.

HMI software and services

EcoStruxure Operator Terminal Expert — Touchscreen configuration software

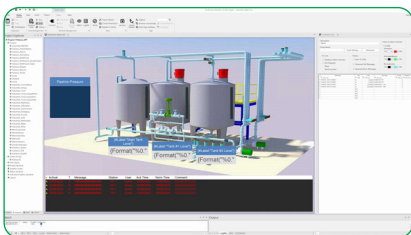


EcoStruxure Operator Terminal Expert

- Operate intuitively
 - Ability to go beyond the limitations of the physical screen size to improve productivity
 - Convert already created Landscape screens into Portrait screens for vertical scrolling and for screens that require many operation switches
- Reduce time to market
 - Efficient and intuitive engineering
 - For faster customization and modification
- Improve efficiency
 - High usability and image quality for the operator (experience design)
 - With Web Viewer feature, watch/operate the HMI screen remotely with mirroring function



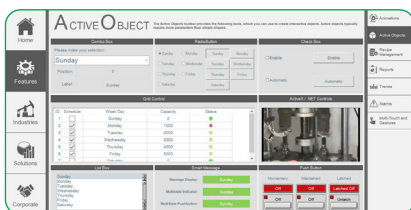
EcoStruxure Machine SCADA Expert — Lite SCADA for line management



EcoStruxure Machine SCADA Expert

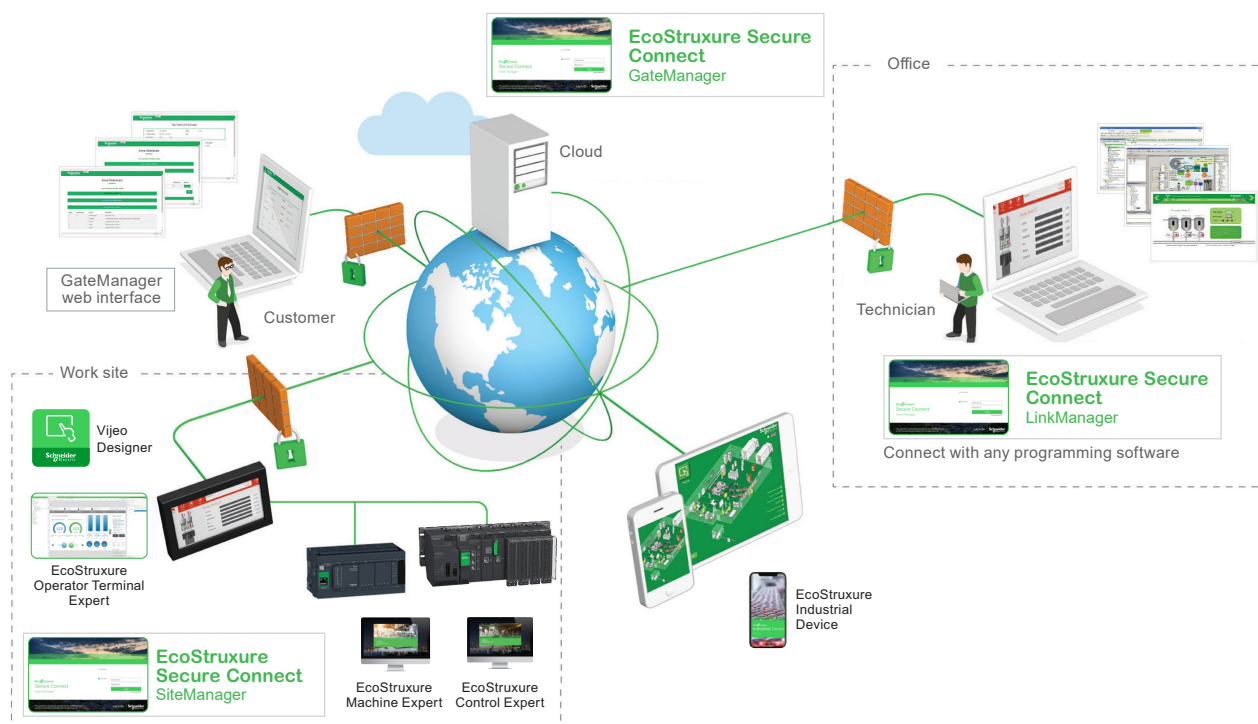
- Save time
 - Quick and easy to install directly on our iPCs
 - Save days of testing and commissioning thanks to a fully tested and validated association
 - Tailored information at a glance using BI-Dashboard template
- Save money
 - Get peace of mind and save time and resources with our single point of contact for Hardware/Software/Operating System support
 - Access SCADA level software, with all its benefits, at a competitive cost/features ratio
- Connectivity and data management
 - Integrated Edge Connectivity
 - Monitor and control remotely using a PC, tablet or smartphone

Note: For Harmony HMIP6, EcoStruxure Machine SCADA Expert Runtime pre-installed version is available as an option in the online configurator.



HMI software and services

EcoStruxure Secure Connect — Secure remote access solution



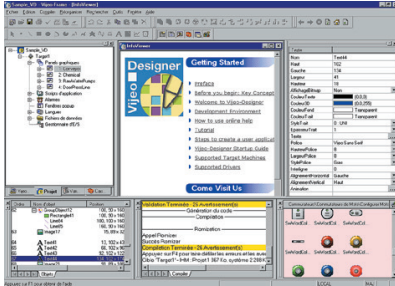
- **Peace of mind:** Connect remotely to industrial equipment without compromising security.
- **Easy to use:** EcoStruxure Secure Connect Site Manager is pre-installed on most HMI panels' firmware; no additional installation is needed and it is ready to use with a valid license.
- **Save cost:** With the EcoStruxure Secure Connect, you can do monitoring, troubleshooting, and remote maintenance, just as you were on the site. You can also connect with other equipment that are connected to the HMIs (such as PLCs) and perform the same task on them.
- **Accessibility:** Also available in the EcoStruxure Industrial Device app (iPhone/Android)

HMI software and services

Vijeo Designer — Classic HMI configuration software

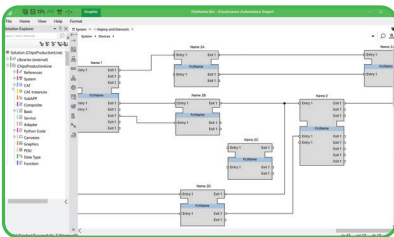


Vijeo Designer



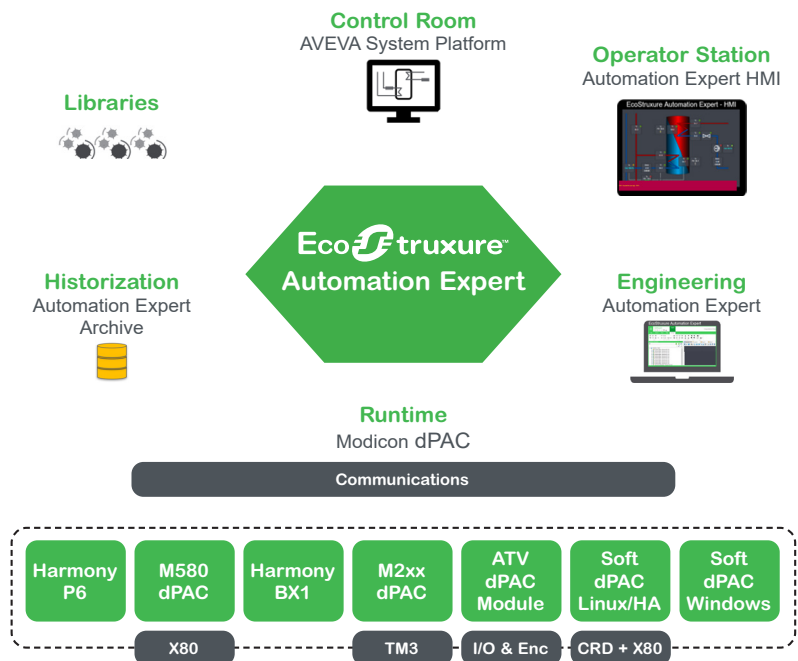
- Multi-platform: from optimized panels to iPCs
- Multi-panel communication: automatic data sharing between up to 8 different panels
- Multi-language: 15 languages in runtime and 38 alphabets
- Multi-protocol: on COM and Ethernet ports
- Multi-access: local or remote display with WEB Gate, Vijeo Designer Air
- Multi-media: video/sound record/replay capability

EcoStruxure Automation Expert — Software-centric industrial automation system



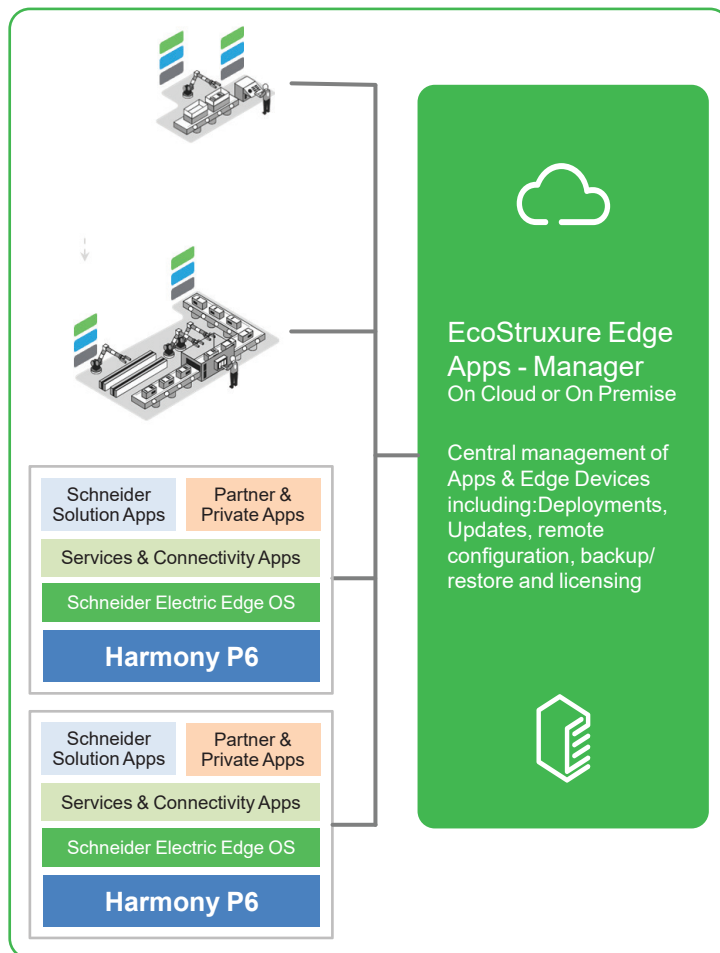
EcoStruxure Automation Expert

- EcoStruxure Automation Expert is a new category of industrial automation system that leverages innovative technology to enable industrial operators to achieve step-change improvements over traditional process control systems in productivity, quality, flexibility, and security over the full lifecycle of their industrial assets.



HMI software and services

EcoStruxure IIoT Edge Platform

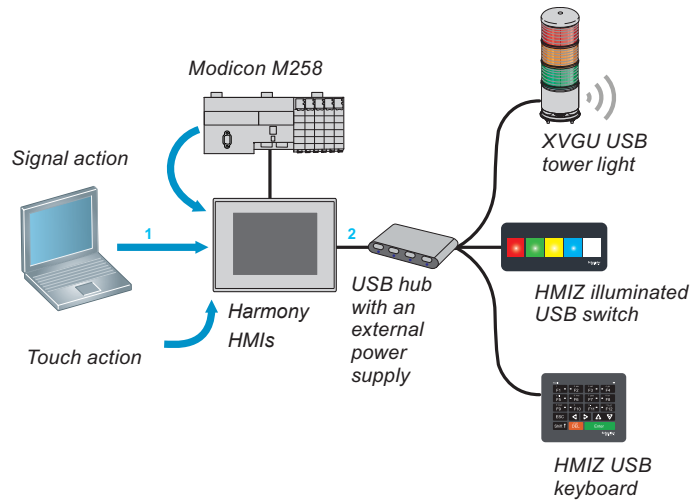


IIoT Edge Platform enables seamless collaboration among diverse devices and systems, ensuring efficient and secure data exchange in a cyber-secure environment, while also promoting flexibility and easy integration. Benefits include improved operational efficiency, enhanced cybersecurity, and simplified integration of new technologies and applications.

- Provides **vendor agnostic** support to **various protocols and technologies**.
- Facilitates **interoperable collaboration** among industrial devices, optimizing operations.
- Ensures **secure data collection** and exchange for efficient **information flow**.
- Empowers **custom app development** for tailored solutions with **pre-built services** and **connectivity** features.
- Integrates **AI** and **advanced analytics** for data-driven insights and **decision-making**.
- Provides a **cyber-secure environment**, safeguarding valuable data integrity.

Harmony USB accessories

The functionality of the Harmony HMI can be extended with USB connected accessories. These innovative accessories can be easily installed and operated with HMI terminals. Their configuration is part of the overall HMI project and is stored in the terminal memory. The illuminated switch panel and the keyboard panel are mounted via a 22 mm/0.866 in. hole, simplifying installation.



Harmony HMIZRA



Supporting Software



■ Illuminated switch

- 5 tactile switches with configurable LED (red/green/yellow/white/blue)
- Dynamic light changes and flashing to display the machine status
- Easy mounting with one-cable connection and 22.5 mm/0.885 in. hole

Harmony XVGU



Supporting Software



Vijeo Designer



EcoStruxure Machine SCADA Expert



■ Tower light

- USB powered tower light with 3 LED light elements
- Multicolor with red, orange, green, or blue
- 85 dB buzzer with 4 configurable sound patterns
- Easy mounting with single USB cable

Quick Product Selection Tables

Basic HMI panels for simple machines

Platform	Harmony ST6				Harmony STO7 -Compact HMI-	Harmony GTO -Standard HMI-	Harmony STU -Cut-out free HMI-	Harmony SCU -HMI Controller -
	Basic HMI ST6	Basic Web HMI STW6	Basic Modular STM6	Basic Edge Box HMI				
Modular	–	–	Yes	–	–	–	Yes	Yes
Screen size	W4", W7", W10", W12", W15"	W4", W7", W10", W12", W15"	No Face or W4", W7"	No Face	4.3"	3.5", 5.7", W7", 7", 10", 12"	3.5", 5.7"	3.5", 5.7"
Screen resolution	480 x 272 / 800 x 480 / 1024 x 600 / 1280 x 800 / 1366 x 768	480 x 272 / 800 x 480 / 1024 x 600 / 1280 x 800 / 1366 x 768	480 x 272 / 800 x 480	–	480 x 272	320 x 240 / 640 x 480 / 800 x 480 / 800 x 600	320 x 240	320 x 240
Application memory	128 MB	512 MB	128 MB	–	26 MB	64 MB/128 MB or 96 MB/128 MB	32 MB	128 MB
Backup memory	512 KB	128 KB	512 KB	–	128 KB	128 KB to 512 KB	64 KB	128 KB
Ethernet port	1 or 2 LAN port(s)		2 LAN port(s)		None or 1 LAN port	None or 1 LAN port	1 LAN port	1 LAN port
Serial line	RS-232C/485 (COM1) only or RS-232C (COM1) and RS-485 (COM2)	None	RS-232C/485 (COM1)	RS-232C/485 (COM1)	None or RS-232C or RS-232C/RS-485	RS-232C/485 (COM1) only or RS-232C (COM1) RS-485 (COM2)	RS-232C/RS-485	RS485/RS232
Operating temperature	0...50 °C/32...122 °F		0...50 °C/32...122 °F or 0...60 °C/32...140 °F	0...60 °C/32...140 °F	0...50 °C/32...122 °F	0...50 °C/32...122 °F or 0...55 °C/32...131 °F	0...50 °C/32...122 °F	0...50 °C/32...122 °F
Software	EcoStruxure Operator Terminal Expert	HTML pre-installed browser	EcoStruxure Operator Terminal Expert	EcoStruxure Machine SCADA Expert	EcoStruxure Operator Terminal Expert	Vijeo Designer	Vijeo Designer	EcoStruxure Machine Expert

Advanced HMI panels for performance machines

Platform	Harmony GTU -High performance HMI-			Harmony GTUX -eXtreme outdoor HMI-	Harmony GK -Keyboard HMI-
	HMIG2U	HMIG3U	HMIG5U21, HMIG5U22		
Modular	Yes			Yes	–
Screen size	W7", 10.4", W10", 12.1", W12", 15", W15", W19"			W7", W12", W15"	5.7", 10.4"
Screen resolution	800 × 480/800 × 600/1024 × 768/1280 × 800			800 × 480/1280 × 800/ 1366 x 768	320 × 240/640 × 480
CPU	RISC, 600 MHz		x86, 1.33 GHz	–	–
Operating system	Real time OS		Windows 10	Real time OS	Real time OS
Application memory	256 MB		4 GB	256 MB	128 MB
Backup memory	512 KB			512 KB	512 KB
Expansion memory	SD card		SD card and CFast card 32 GB	SD card	SD card
Ethernet port	2 LAN ports			2 LAN ports	1 LAN port
Serial line	RS-232C (COM1), RS-485 (COM2)	RS-485 (COM1), RS-232C/RS-485/RS-422 (COM2)		RS-485 (COM1), RS-232C/RS-485/RS-422 (COM2)	RS-232C (COM1), RS-485 (COM2)
Supply voltage	12...24 V $\overline{=}$			12...24 V $\overline{=}$	24 V $\overline{=}$
Operating temperature	0...60 °C /32...140 °F			-30...65 °C/-22...149 °F or -30...70 °C/-22...158 °F or -20...60 °C/-4...140 °F	0...55 °C /32...131 °F
Software	Vijeo Designer	Vijeo Designer / EcoStruxure Operator Terminal Expert	Vijeo Designer / EcoStruxure Operator Terminal Expert	Vijeo Designer/ EcoStruxure Operator Terminal Expert	Vijeo Designer

Industrial PC for line management

Platform	Harmony P6 (1)		
	Advanced Modular Box	Standard Modular Box	Basic Modular Box
Optional Modular Displays - Screen size	12", 15", W10", W12", W15", W19", W22"		
Front protection (2)	IP66F, IP67F, Type 1, Type 4X (NEMA indoor use only), Type 13 UL 50/50E		
Certifications	All models: CE, RCM, UL 61010-2-201, CSA C22.2 No. 61010-2-201, UL 121201, CSA C22.2 No. 213 DC models: IECEx/ATEX for use in Zone 2 gas/Zone 22 dust, DNV		
RAM	4 to 16 GB DDR4 RAM or 8 to 32 GB DDR4 RAM	8 to 32 GB DDR4 RAM	4 or 8 GB DDR4 RAM
CPU processor	Intel Core i7-8665UE or Intel Core i5-8365UE or Intel Celeron 4305UE	Intel Core i3-8145UE	Intel Atom X6211E or X6425E
OS	Windows 10 IoT Enterprise 2019 LTSC (64-bit) Ubuntu LTSC (64-bit) (6)		Windows 10 IoT Enterprise 2021 LTSC (64-bit)
Storage slots	1x M.2 SSD SATA, 2x 2.5-inch SATA (HDD/SSD)	1x M.2 SSD SATA, 1x 2.5-inch SATA (HDD/SSD)	2x M.2 SSD SATA, 1x SD card
Expansion slots	2x interfaces slots and optional extension module for 2x PCI/PCIe slots	1x interfaces slots	–
IIoT and approved Cybersecurity	Node-RED, TPM 2.0 module (preinstalled), Trellix Whitelisting		
Software	EcoStruxure Operator Terminal Expert, EcoStruxure Machine SCADA Expert (3), EcoStruxure Secure Connect, Vijeo Designer, EcoStruxure Automation Expert (6)		

Platform	Harmony BX1	
	Edge Box	
Certifications	All models: IEC 61131-2 with Schneider Power supply ABLM1A24012, 61000-6-1, /6-3	
RAM	Onboard DDR4L 4GB	
CPU processor	ARM NXP i.MX8M Plus Quad-Core Cortex-A53 1.6GHz	
Storage	Onboard 32 GB	
OS	Debian 12	
Storage slots	1 X microSD slot	
Expansion slots	2x miniPCIe slots	
Cybersecurity	TPM 2.0 module (preinstalled)	
Software	EcoStruxure Automation Expert, EcoStruxure Secure Connect	
Connectivity	2 X Ethernet, 2 X RS-232/422/485 switchable x 2, Phoenix Connector (4) (Cable length must be less than 30 m), 2 X USB 3.0 Type-A CAN-FD x 2 CH, Phoenix Connector (5), HDMI x1 (Output)	

(1) Available as Configured-to-order only and can be ordered using the online configurator.

(2) On the front panel when properly installed in an enclosure and not using the front panel USB port.

(3) For Harmony HMIP6, EcoStruxure Machine SCADA Expert Runtime preinstalled version is available as an option in the online configurator.

(4) Not supported with the pre-installed version of EcoStruxure Automation Expert Soft dPAC. For the usage of these interfaces, please contact our customer support.

(5) Not supported and is not for general purpose usage.

(6) Applicable only to Intel Celeron 4305UE Intel Core i3-8145UE processors.

HMI software comparison table

Platform	EcoStruxure Operator Terminal Expert	EcoStruxure Machine SCADA Expert	Vijeo Designer
Modern/Stylish design	+++	++	+
Efficient operation	+++ (multi-screen, scrollable screen, custom zoom view)	++	+
Easy screen creation	+++	++	++
Easy programming	++	++	+++
Multitouch gestures	++	+++	-
Security	++	+++	+
Mobile access	+++ (Web Viewer/Web API)	+++ (Web API)	++
Languages	+	+++	+++
IT/OT connectivity	++	+++	+
Data management	+	+++	+
Target equipment type	Simple/Compact Machine	Performance/Complex Machine Line Management	Simple/Compact Machine Performance/Complex Machine
Typical target application	Marine, Control Panel Builders, HVAC&R, Pumping, Packaging, Food & Beverages	Material handling, Packaging, Food & Beverages, Material working, SEMI/ FPD, Automotive line	Marine, Control Panel Builders, HVAC&R, Pumping, Packaging, Food & Beverages, Oil & Gas, WWW
Optimum hardware	Harmony ST6/STO7/GTUX/GTUX (HMIG5U22 & HMIG3U), Harmony iPCs	Harmony iPCs (1), Edge Box HMI	Harmony iPC/GTO/STU/SCU/GTUX/ GTUX/GK

+++ Highly recommended

(1) For Harmony HMIP6, EcoStruxure Machine SCADA Expert Runtime preinstalled version is available as an option in the online configurator.

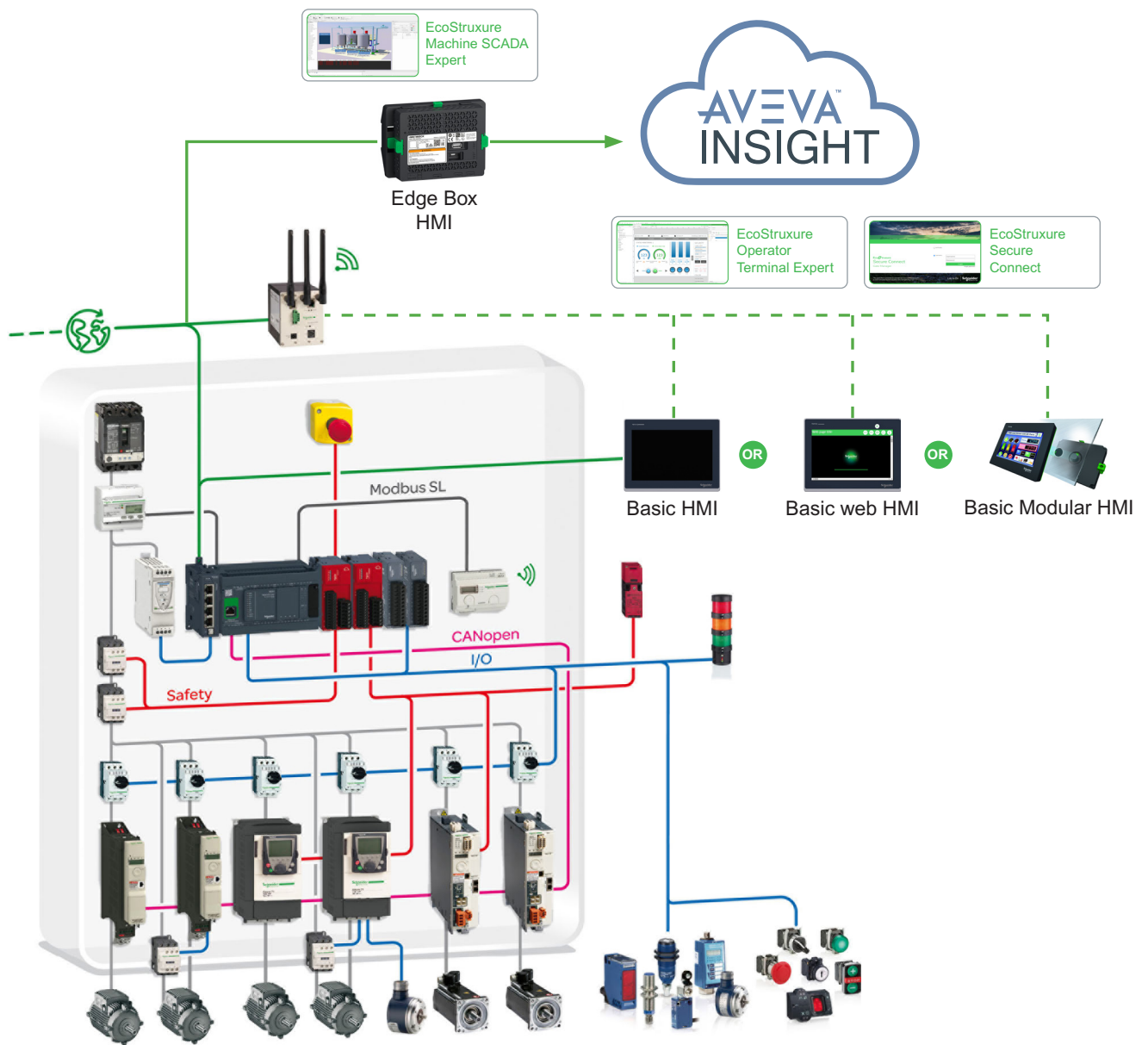
Harmony USB compatible accessories table

Harmony HMIs	USB accessories for HMI terminals	
	USB tower light	Illuminated USB switch
	XVGU3S●●●	HMIZRA1
Harmony Panel PC	No	Yes
Harmony Box PC	No	Yes
HMIGK	Yes	Yes
HMIGTU	Yes	Yes
HMIGTUX	No	No
HMIGTO	Yes	Yes
HMIST6	No	No
HMISTU	No	No
HMISTO7	No	No
HMISCU	Yes	Yes

Examples of use cases

Examples of use cases

Harmony ST6 Basic HMI for simple machines: Flexible architectures for the same application



STM6 Basic HMIs for simple applications come with extra certifications.



Class 1 Div 2 Category 3



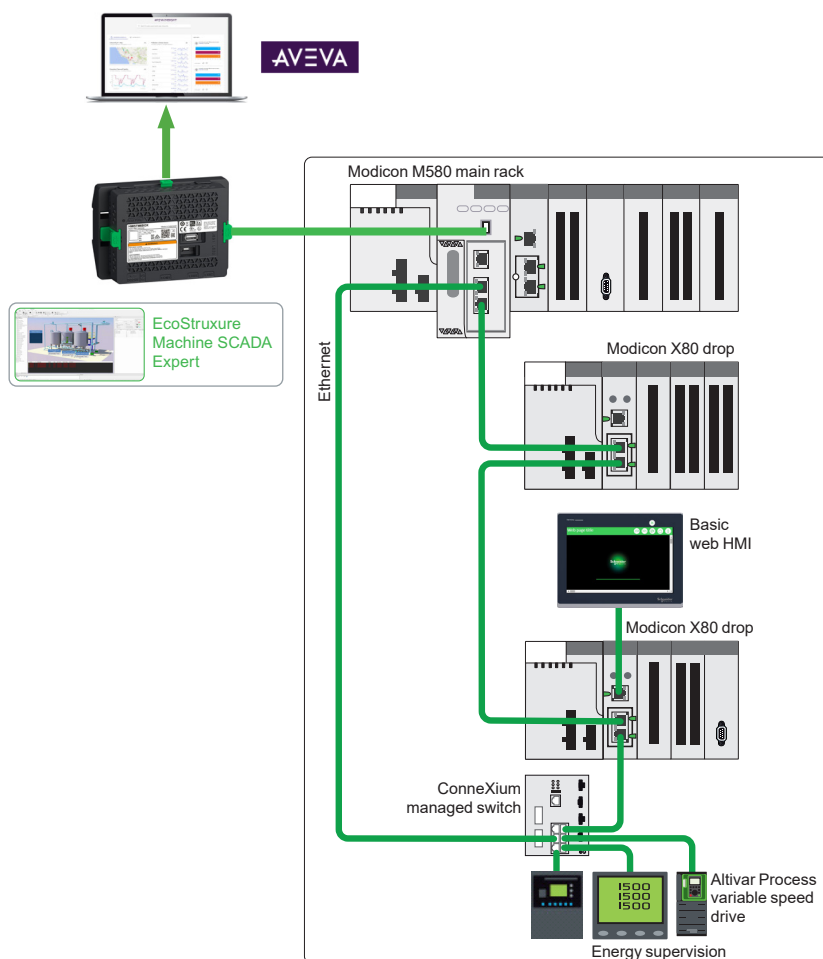
Note: Refer to [website](#) for latest Certifications.

Examples of Use cases

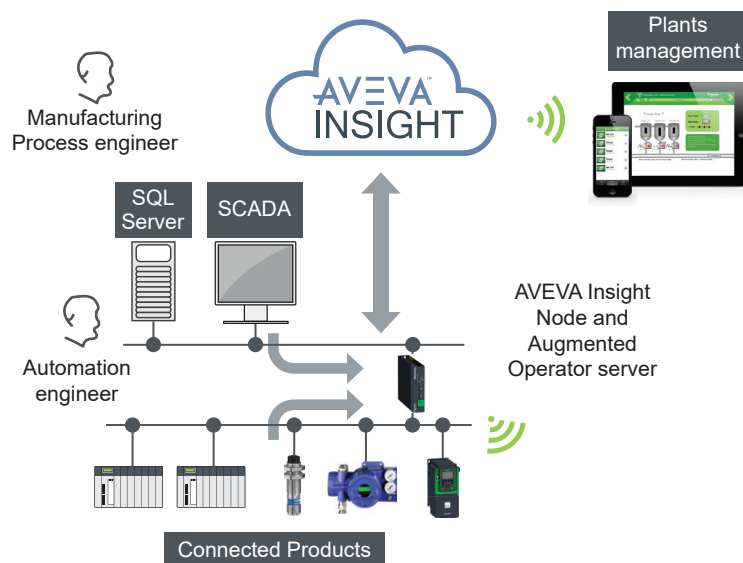
Harmony ST6 Basic HMI in the End User Plant



Harmony STW6 and Edge Box HMI are used as secondary HMIs for the maintenance and diagnostic tools in the EcoStruxure plant architecture.



Harmony iPC powered by an IIoT application with Node-RED in process and manufacturing optimization



Energy, production, and asset management across plants and locations

- Process improvement insights and actionable data:
 - Parallel wiring model, not interfering within the control system
 - AVEVA Insight connector to the Cloud
- Cybersecured industrial automation system, compliant to ISA/IEC 62443
- For most demanding environments, certified for hazardous locations

Legal information

The information provided in this Catalog contains description of Schneider Electric products, solutions and services ("Offer") with technical specifications and technical characteristics of the performance of the corresponding Offer.

The content of this document is subject to revision at any time without notice due to continued progress in methodology, design and manufacturing.

To the extent permitted by applicable law, no responsibility or liability is assumed by Schneider Electric and its subsidiaries for any type of damages arising out of or in connection with (i) informational content of this Catalog not conforming with or exceeding the technical specifications, or (ii) any error contained in this Catalog, or (iii) any use, decision, act or omission made or taken on basis of or in reliance on any information contained or referred to in this Catalog.

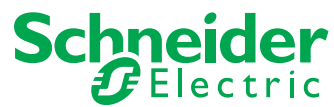
SCHNEIDER ELECTRIC MAKES NO WARRANTY OR REPRESENTATION OF ANY KIND, WHETHER EXPRESS OR IMPLIED, AS TO WHETHER THIS CATALOG OR ANY INFORMATION CONTAINED THEREIN SUCH AS PRODUCTS AND SERVICES WILL MEET REQUIREMENTS, EXPECTATIONS OR PURPOSE OF ANY PERSON MAKING USE THEREOF.

Schneider Electric brand and any trademarks of Schneider Electric and its subsidiaries referred to in this Catalog are property of Schneider Electric or its subsidiaries. All other brands are trademarks of their respective owners.

This Catalog and its content are protected under applicable copyright laws and provided for informative use only. No part of this Catalog may be reproduced or transmitted in any form or by any means (electronic, mechanical, photocopying, recording, or otherwise), for any purpose, without the prior written permission of Schneider Electric.

Copyright, intellectual, and all other proprietary rights in the content of this Catalog (including but not limited to software, audio, video, text, and photographs) rests with Schneider Electric or its licensors. All rights in such content not expressly granted herein are reserved. No rights of any kind are licensed or assigned or shall otherwise pass to persons accessing this information.

Life Is On



Learn more about our products at www.se.com/HMI

Design: Schneider Electric
Photos: Schneider Electric

Schneider Electric Industries SAS

Head Office
35, rue Joseph Monier - CS 30323
F-92500 Rueil-Malmaison Cedex
France

DIA5ED1161001EN
January 2025 - V8.0