



ROCKWELL AUTOMATION SLC 500 MIGRATION GUIDE

After 35 years in the automation industry, Rockwell Automation has officially discontinued the SLC 500 platform, with the CompactLogix 5380 control system now serving as its successor.



Key Benefits of Upgrading to CompactLogix 5380

Modernising your control system improves performance, security, and efficiency in a competitive market.

High Performance

- Equipped with dual Gigabit Ethernet ports for fast, reliable I/O and motion control over EtherNet/IP, supporting up to 32 axes.
- Optimised firmware ensures maximum efficiency in demanding industrial applications.

Advanced Security Features

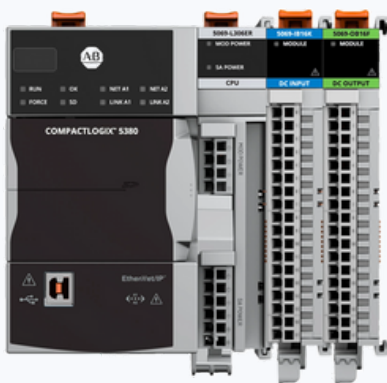
- Encrypted firmware to enhance system integrity and protection.
- Change detection and logging improve security oversight.
- Role-based access control allows secure user permissions on routines and Add-On Instructions.
- Users can enable or disable embedded ports, offering greater control over connectivity.
- IEC 62443-4-2 certified, ensuring compliance with industry cybersecurity standards at Security Level 1.

Enhanced Productivity & System Efficiency

- Dual Ethernet ports enable flexible networking options, supporting Dual-IP configurations or Device Level Ring (DLR) and linear topologies for up to 180 nodes.
- Compatible with up to 31 local I/O modules, with memory options ranging from 0.6 MB to 10 MB.
- Onboard display provides real-time diagnostics and troubleshooting for seamless operations.

CompactLogix 5380 Applications

The CompactLogix 5380 is ideal for a wide range of industrial applications, including:



 **Industrial Automation**

 **Manufacturing Systems**

 **Energy Management**

 **Building Automation**

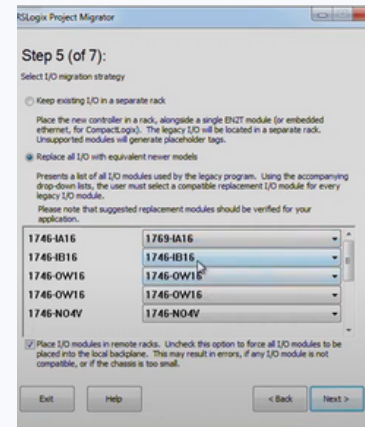
 **Water & Wastewater Treatment**

 **Mining**

Tools to Plan and Execute Your Migration

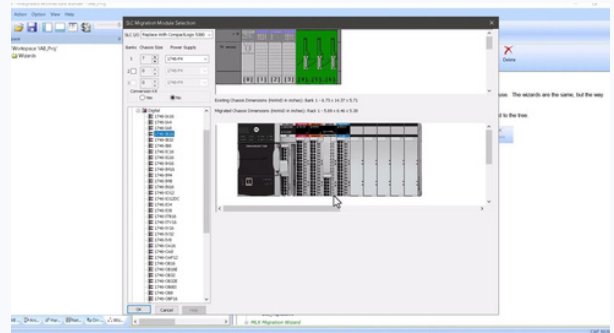
RSLogix 5000 or Studio 5000 Project Migrator

The Project Migrator tool saves time and effort when converting SLC 500 application code. After exporting your RSLogix 500 project file, the built-in conversion utilities assist in importing the code into RSLogix 5000 or Studio 5000 Logix Designer. View [here](#) how to use the project migrator tool in RS Logix 5000



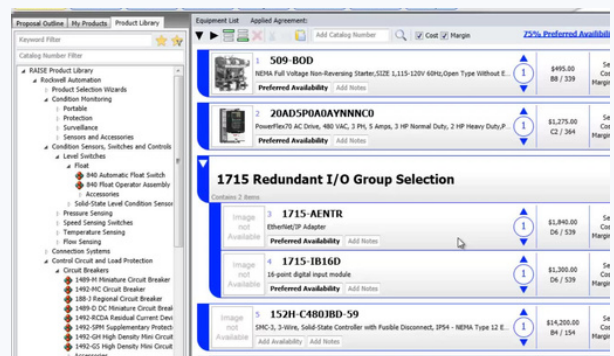
Integrated Architecture Builder

The Integrated Architecture Builder (IAB) is a user-friendly software tool that assists in designing and configuring CompactLogix 5380 control systems. It automatically creates a detailed Bill of Materials (BOM) based on your current SLC control setup. CompactLogix systems can also be configured within IAB.



ProposalWorks

This tool streamlines the creation of Bills of Materials, RFQs, and proposals for automation projects. Featuring over 1,500 pre-built templates and an efficient search function, it helps you quickly find the right components for your application.



SLC EtherNet/IP Communication Module

The 1747-AENTR module enables communication between a CompactLogix 5380 controller and remote I/O via Ethernet. Using this module in a phased upgrade allows your existing remote I/O network to remain operational, simplifying testing and providing the option to revert if necessary.



SLC 500 to CompactLogix 5380 Migration FAQ

Q: Does Rockwell provide a tool to convert SLC 500 programs to CompactLogix 5380?

A: Yes. The Studio 5000 Logix Designer includes a SLC 500 to CompactLogix Conversion Tool that helps migrate RSLogix 500 programs to Logix-based projects.

Q: Which SLC 500 processors are supported for conversion?

A: The tool supports migration from:

- SLC 5/01, 5/02, 5/03, 5/04, 5/05 To: CompactLogix 5380 controllers (L3x, L4x series)

Q: Why can't I convert directly to a ControlLogix or older CompactLogix controller?

A: The CompactLogix 5380 is the recommended target due to its modern architecture and compatibility with the conversion tool. For ControlLogix migrations, additional manual adjustments may be needed.

Q: Where is the conversion tool located in Studio 5000?

A: In Studio 5000, go to:
Tools → Migrate Project → SLC 500 to Logix

Q: Where can I find additional Rockwell literature for converting SLC500 programs to Logix 500?

A: Rockwell Automation have supporting documentation to assist with the conversion of SLC500 programs to Logix 5000 systems. A useful reference can be found [here](#).

Resource Guides



FAQ





If Your Not Ready To Upgrade

PLC Hardware may still be able to source genuine Rockwell SLC 500 components from our global supply chains, to support your critical operations ensuring continuity when a full system upgrade isn't immediately feasible.



PLC Hardware Solutions Pages



**HMI
Solutions**



**REMOTE IO
Solutions**



**VF Drive
Solutions**



**DA Vision
Industrial PC Solutions**

Contact Us

Our overseas suppliers offer a comprehensive selection of control and automation products from our core product manufacturers, including PLCs, HMIs, IO modules, and VF drives.

If you can't find what you're looking for on our website, please contact us - we may be able to source it for you.

PLC Hardware warrants that new & current PLC processors, power supplies, chassis, and both local and remote IO, include a two-year warranty. All other components include a one-year warranty. Obsolete hardware warranties are dependent on availability

Enquire Now