

ZJR7 Intelligent Soft Starter

Motor Soft Starter ZJR7 Series is independently developed by ZIRI Electrical. Power range is 5.5-630kW. Input frequency: 50Hz or 60Hz. The main function is balance the current when the motors starts and stop. Also protect the motor. ZJR7-E Series bypass contactor soft starter and ZJR7-B built-in contactor soft starter can be selected. OEM service can be offered for clients.



Z JR 7 B 60 T3-S2

Business Code		Rated Control Voltage Single Phase 220VAC
Soft Starter		Rated Working Voltage T3: Three Phase 220~380VAC T4: Three Phase 220~480VAC
Design Number		Rated Working Current 60:60A
Type E: External bypass contactor B: Built-in contactor		

Main Features

- 01 With two models of external bypass and internal bypass, it is convenient for customers to choose.
- 02 Main terminal connecting line is fixed directly by screws, which is safe and reliable.
- 03 The control line alone power supply is more stable, can make the main power supply range covers 220-480V without changing the machine.
- 04 LCD display, standard Chinese and English options, more convenient to use, can also be customized according to customer requirements of other language types.
- 05 Three groups motor parameters can be switched, more convenient to use.
- 06 With PTC temperature sensor interface, motor protection is more comprehensive.
- 07 Equipped with RS485 communication interface as standard, it is more convenient for group network control.
- 08 10 sets fault records, Easier to find problem.

Technical Indications

Item		Item Description
Rated working voltage		Three Phase 220-480VAC±10%/50(60)Hz
Rated limit short-circuit current		20kA (400A and Below) 30kA (400A and above)
Coordination type		Type I
Use categories		AC-53b
Rated control supply voltage		180-260VAC
Rated insulation voltage		660V
Applicable motors		Squirrel-cage three-phase asynchronous motors
Number of starts		It's recommended that No more than 5 times per hour, the number of starts can be set in the parameters
Control mode		(1) Operation panel control; (2) External terminal control; (3) Communication control
Start Mode		(1)Voltage ramp starting;
		(2)Torque Start;
		(3)Kick start+Voltage ramp Start
		(4)Kick start +torque start
Stop Mode		(1)Soft Stop ;(2) Free Stop
Protection Function		(1)Instantaneous stop terminal open circuit fault; (2)Soft starter overheating; (3)Motor overheating; (4)Input Phase loss; (5)Output phase loss; (6)Three phase unbalance;(7)Underload protection; (8)Overload protection;(9)The power supply voltage is too low; (10)The power supply voltage is too high; (11)Error setting parameters; (12)The load is shorted circuit ; (13)frequency error; (14)External faults; (15) The starting time is too long; (16) Too many starting times and etc.
Ambient	Place to be used	Indoor; no corrosive gases, no conductive dust; well ventilated.
	Altitude	The altitude does not exceed 1000m, if it exceeds 1000m and is less than 3000m, the current is reduced by 1% for each additional 100m.
	Ambient temperature	Ambient temperature should be between -10°C~+40°C, +40°C~+50°C should be derated, the current is derated by 2% for every 1°C rise in temperature.
	Ambient humidity	The relative humidity is no more than 90%, without dew condensation .
	Vibration	Vibration force should be below 0.5G
Structure	Protection Class	IP20
	Cooling Mode	Natural air cooling

ZJR7-E Bypass Contactor Soft Starter Outline Dimension(Unit:mm)



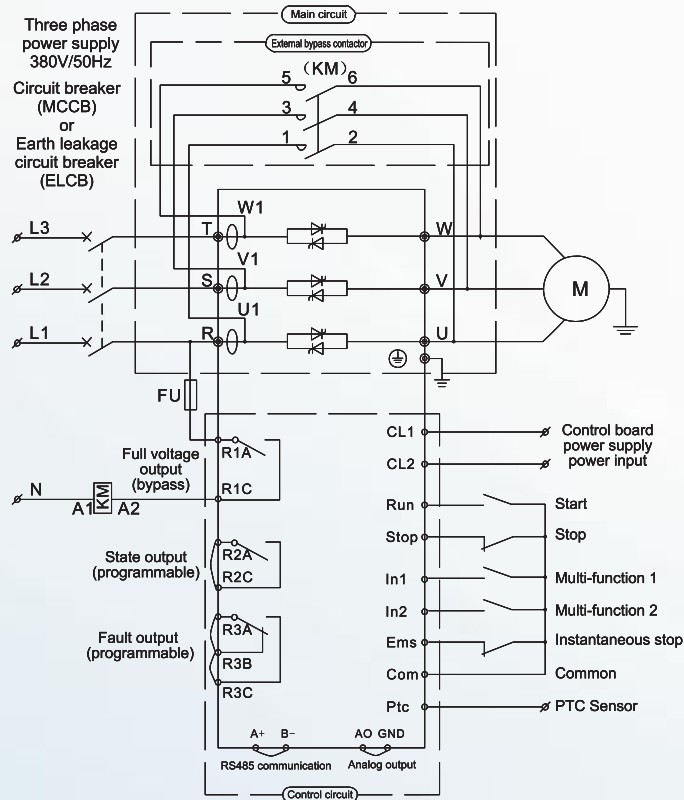
Fig.1



Fig.2

Soft starter Model	Rated Power	Rated Current	Outline Size(mm)				Install Size(mm)				Figure
			H	H1	W	D	H2	W1	W2	Φd	
ZJR7-E11T3-S2	5.5kW	11A	290	-	155	170	272	138	-	5.5	Fig.1
ZJR7-E15T3-S2	7.5kW	15A									
ZJR7-E22T3-S2	11kW	22A									
ZJR7-E30T3-S2	15kW	30A									
ZJR7-E37T3-S2	18.5kW	37A									
ZJR7-E44T3-S2	22kW	44A									
ZJR7-E60T3-S2	30kW	60A									
ZJR7-E74T3-S2	37kW	74A									
ZJR7-E90T3-S2	45kW	90A									
ZJR7-E110T3-S2	55kW	110A									
ZJR7-E150T3-S2	75kW	150A	380	360	220	230	340	180	-	7	Fig.2
ZJR7-E180T3-S2	90kW	180A									
ZJR7-E220T3-S2	110kW	220A									
ZJR7-E264T3-S2	132kW	264A	490	447	270	230	422	230	-	7	
ZJR7-E320T3-S2	160kW	320A									
ZJR7-E370T3-S2	185kW	370A									
ZJR7-E400T3-S2	200kW	400A									
ZJR7-E440T3-S2	220kW	440A	560	497	310	230	472	270	100	7	
ZJR7-E500T3-S2	250kW	500A									
ZJR7-E560T3-S2	280kW	560A									
ZJR7-E630T3-S2	315kW	630A	590	527	350	230	502	300	110	9	
ZJR7-E710T3-S2	355kW	710A									
ZJR7-E800T3-S2	400kW	800A									
ZJR7-E900T3-S2	450kW	900A	660	577	420	230	552	370	135	9	
ZJR7-E1000T3-S2	500kW	1000A									
ZJR7-E1120T3-S2	560kW	1120A									
ZJR7-E1260T3-S2	630kW	1260A									

ZJR7-E External Bypass Contactor Soft Starter Basic Wiring Diagram



Main Circuit Connection for ZJR7-E Soft Starter

Three phase power supply
AC380V/50Hz

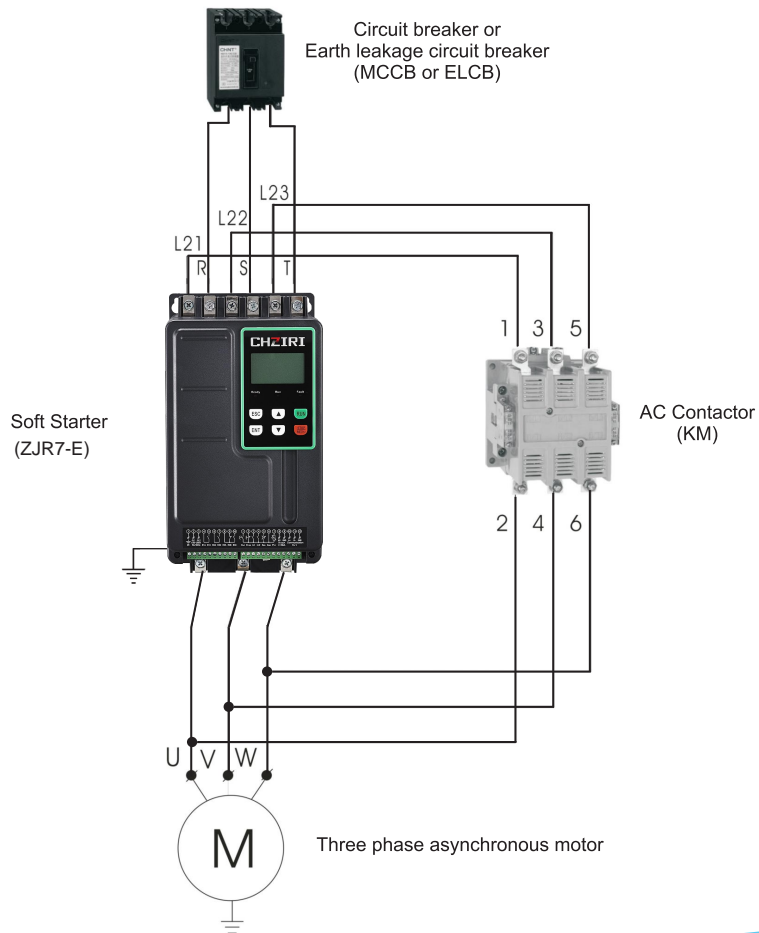




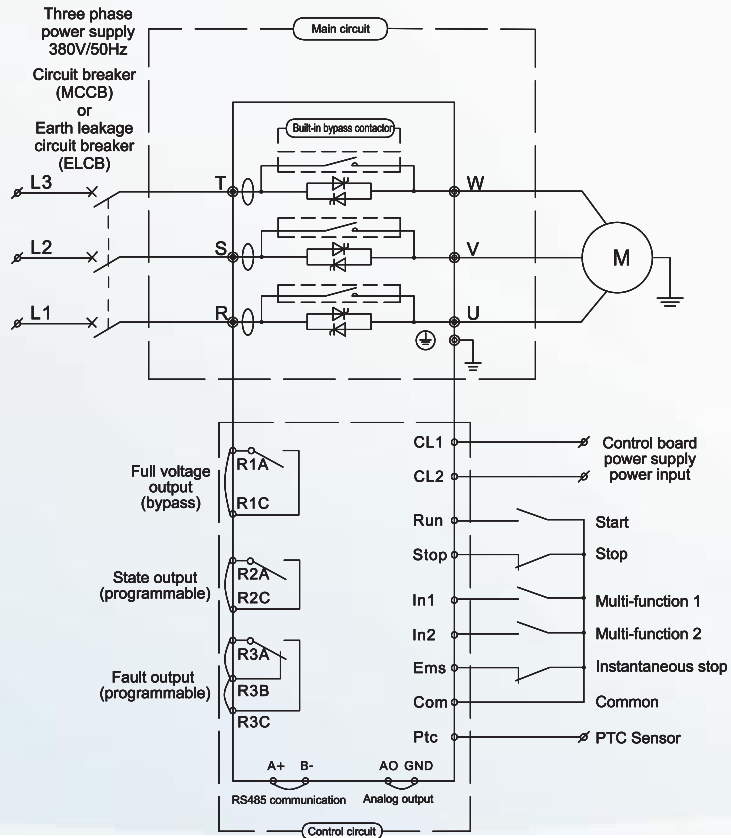
Fig.3



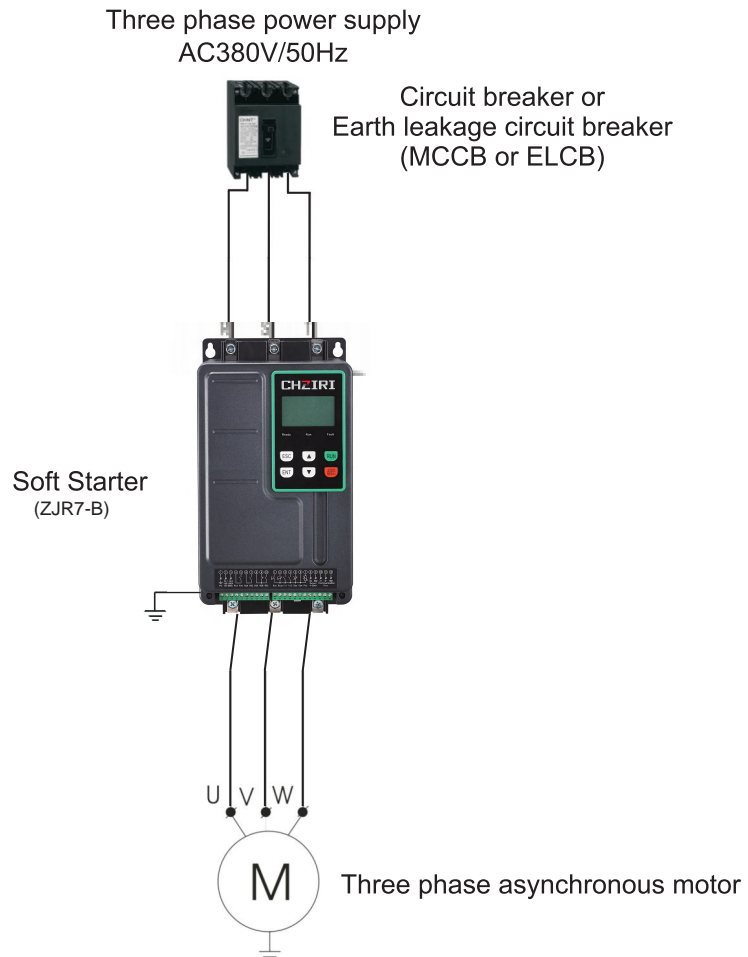
Fig.4

Soft starter Model	Rated Power	Rated Current	Outline Size(mm)				Install Size(mm)				Figure
			H	H1	W	D	H2	W1	W2	Φd	
ZJR7-B11T3-S2	5.5kW	11A	290	-	155	170	272	138	-	5.5	Fig.3
ZJR7-B15T3-S2	7.5kW	15A									
ZJR7-B22T3-S2	11kW	22A									
ZJR7-B30T3-S2	15kW	30A									
ZJR7-B37T3-S2	18.5kW	37A									
ZJR7-B44T3-S2	22kW	44A									
ZJR7-B60T3-S2	30kW	60A									
ZJR7-B74T3-S2	37kW	74A									
ZJR7-B90T3-S2	45kW	90A									
ZJR7-B110T3-S2	55kW	110A									
ZJR7-B150T3-S2	75kW	150A	370	360	220	230	340	180	-	7	Fig.4
ZJR7-B180T3-S2	90kW	180A									
ZJR7-B220T3-S2	110kW	220A									
ZJR7-B264T3-S2	132kW	264A	585	560	270	230	535	230	-		
ZJR7-B320T3-S2	160kW	320A									
ZJR7-B370T3-S2	185kW	370A									
ZJR7-B400T3-S2	200kW	400A									
ZJR7-B440T3-S2	220kW	440A	660	620	310	230	595	270	100		
ZJR7-B500T3-S2	250kW	500A									
ZJR7-B560T3-S2	280kW	560A									
ZJR7-B630T3-S2	315kW	630A	690	650	350	230	625	300	110		
ZJR7-B710T3-S2	355kW	710A									
ZJR7-B800T3-S2	400kW	800A									
ZJR7-B900T3-S2	450kW	900A	740	700	420	230	675	370	135		
ZJR7-B1000T3-S2	500kW	1000A									
ZJR7-B1120T3-S2	560kW	1120A									
ZJR7-B1260T3-S2	630kW	1260A								9	

ZJR7-B Built-in Contactor Soft Starter Basic Wiring Diagram



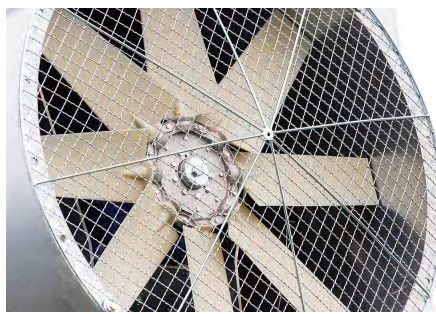
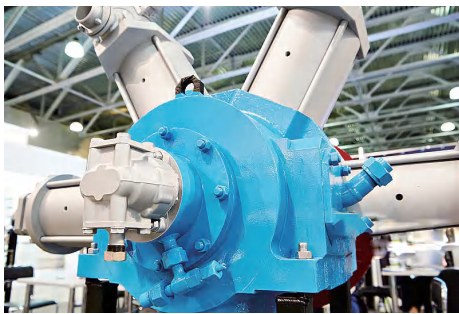
Main Circuit Connection for ZJR7-B Built-in Contactor Soft Starter



Application Setting

As load conditions change, parameters often need to be adjusted. The following table is for reference only.

Application	Start-up boost time	Stop voltage drop time	Initial voltage	Voltage start (Current limit value)
Centrifugal Pump	16	20	40	4
Ball Mill	20	6	60	4
Fan	26	4	30	4
Piston Compressor	16	4	40	3
Light Load Motor	16	2	30	3
Lifting Machinery	6	10	60	3.5
Mixer	16	2	50	4
Crusher	16	10	50	4
Screw Compressor	16	2	40	3
Spiral Conveyor Belt	20	10	40	4
Belt Conveyor Belt	20	10	40	3
Heat Pump	16	20	40	3



Leading Automation Control Solution Provider

ZHEJIANG ZIRI ELECTRICAL TECHNOLOGY CO.,LTD.

Tel:0086-577-27863300

Fax:0086-577-27872255

E-mail:chziri@chziri.com

Add: NO.62-70, DaQiao Road. Liushi.WenZhou, 325604, Zhejiang. China

Http://www.chziri.com

